

LakeHouse Cove at Waterside

1100 Waterline Court (Lot 413)
Clipper Series

Cay
\$1,060,000

Cay

Available August 2023

2,135 sq. ft.

2 Bedroom

2.5 Bath

Den

3 Car Tandem Garage

Resort Style Pool

(Inventory Home To Be Garage Right)



New Home Features

- Coastal A Elevation
- Tray Ceilings in Foyer, Den, and Owner's Suite
- Upgraded Custom Kitchen Cabinets
- Gourmet Kitchen with GE Appliances
- Upgraded Quartz Countertops in Kitchen and Bathrooms
- Upgraded Kitchen Sink
- Below Kitchen Cabinet LED Lighting
- Upgraded Plank Tile in Kitchen, Bath 2, Foyers 1 & 2, Mud Room, Laundry Room, Dinette (Good Morning Room), Great Room, Owner's Suite, Owner's Walk-in Closet, Den, Powder Room, and Suite 2

- Frameless Glass Shower Enclosure with Pivot Door
- Upgraded Bathroom Cabinets
- Upgraded Moen Plumbing Fixtures
- Additional Lighting
- Additional Electrical
- Great Room Opens to Large Lanai
- Half Wall on Lanai with Summer Kitchen Rough-in
- Impact Rated Windows and Sliding Glass Doors

Community Features

- Amenity Center featuring: Lakehouse, Pool, Spa, Fitness Center, Boathouse, Play Areas, Event Lawn, Sunset Lawn, Poolside Cabanas, Bocce Court, Pickleball Courts, Firepits, 2 Dog Parks, Trail System, and Water Taxi Pick Up Location
- Convenient Access to Future Downtown Waterside Place
- Close to Gulf Coast Beaches
- Minutes Away to World Class Shopping and Dining
- Close to Several Area Hospitals
- Sarasota International Airport - 25 Minutes
- Tampa International Airport - 70 Minutes



Homes by Towne
homesbytowne.com

LAKEHOUSE COVE AT WATERSIDE MODEL CENTER: 8188 Grande Shores Drive | Sarasota, FL 34240 | 941-361-2536

HOMES BY TOWNE REALTY INC. SALES ASSOCIATES:

Sarah Lowry slowry@homesbytowne.com | 941-400-9026

Rita Suarez rsuarez@homesbytowne.com | 239-220-6341

Lee Trompke ltrompke@homesbytowne.com | 941-737-8538

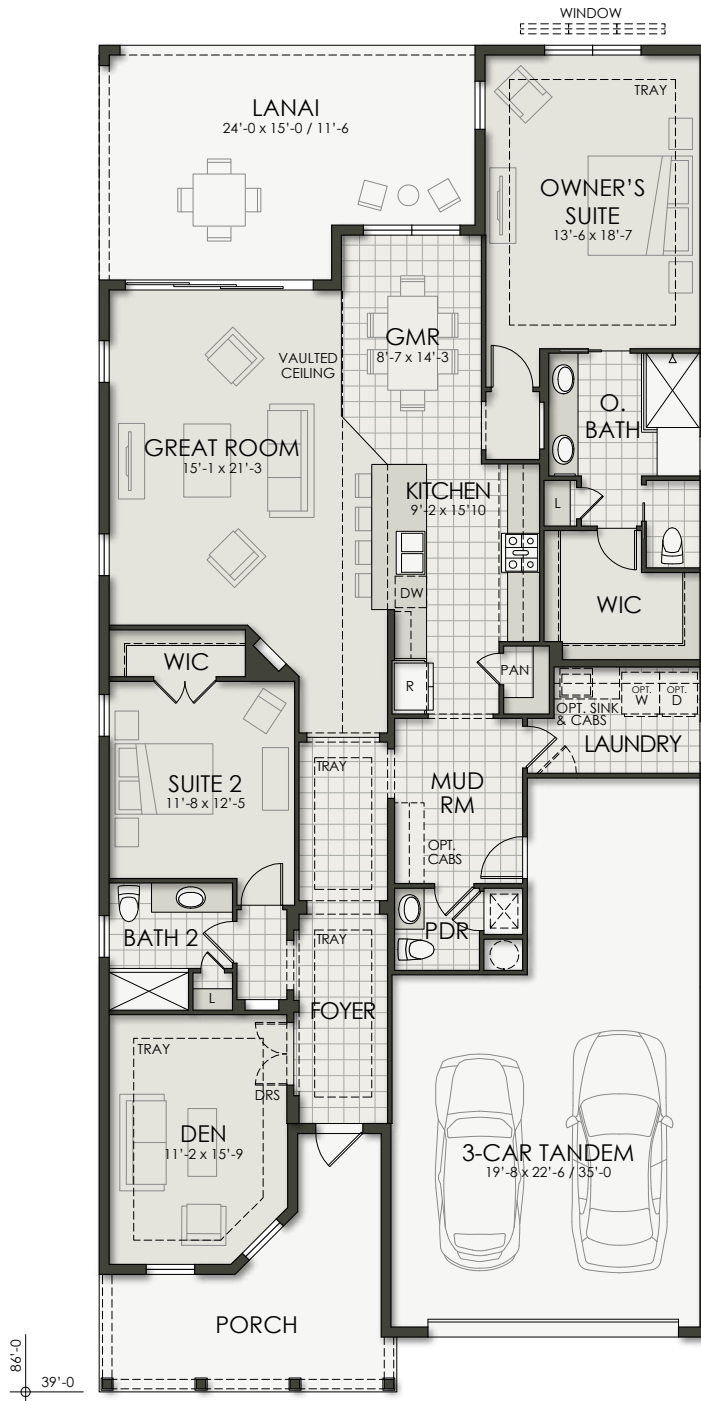
Marissa Stephenson mstephenson@homesbytowne.com | 941-448-1755



LakeHouse Cove at Waterside

1100 Waterline Court (Lot 413)
Clipper Series

Cay
\$1,060,000



Inventory Home To Be Garage Right

Developer reserves the right to modify floor plans, elevations, specifications, features and prices without prior notice. Square footage and room sizes are approximate. Exterior treatments, window locations and room configurations may vary with elevation. Some decorating treatments in and around the model homes may not be included in the list price and are for display purposes only. All renderings and floor plans are artistic conceptions, and are not intended to be an actual depiction of the buildings, fencing, driveways or landscaping. © 2022 Homes by Towne*