

Mountain Valley Lake

3309 Greenway Drive (Lot 8-19)
Burleson, TX 76028

Camden
\$441,992

Camden Elevation C

Available November 2022

2,320 Square Feet
Single-Story Home
3 Bedrooms
2 Baths
Flex Room
Attached 3 Car Garage



Peaceful Country Living. Convenient City Location.

Located just south of Fort Worth, the growing city of Burleson, Texas is an ideal location for this family-friendly neighborhood. Residents will enjoy the rolling hills and wooded views, a recreation area with a Jr. Olympic pool and a 20-acre stocked private lake with fishing pier. Close to shopping, entertainment and quality schools, Mountain Valley Lake combines the convenience of city life with the beauty of the country!

DESIRABLE OPEN CONCEPT FLOOR PLAN FEATURES

Kitchen

- Whirlpool built-in stainless steel appliance package
- Stainless steel range hood
- Marble countertops
- Upgraded cabinets with upgraded designer hardware
- Painted cabinet wrapped kitchen island
- Designer light fixture above kitchen island
- Luxury vinyl plank flooring
- Custom tile backsplash
- Stainless steel undermount sink with designer faucet
- Dining nook with recessed canned lighting
- Generous pantry storage

Exterior

- Brick exterior with elevation enhancements
- Designer front door
- Cedar shutters
- Covered patio
- Privacy fence
- Finished 3 car garage with cedar garage doors
- Coach lighting
- Full sod and irrigation system

Other

- Brick faced electric fireplace with cedar mantel
- Flex room (den) with painted French doors, ceiling fan, and carpeting
- Separate dining room with designer light fixture and luxury vinyl plank flooring
- Spacious laundry room with tile flooring
- Walk-in custom tiled shower and surround, tiled bathtub backsplash, and tile flooring in owner's bath
- Upgraded tiled bathtub surround and tile flooring in bath 2
- Quartz countertops with designer hardware, rectangular undermount sinks with stainless steel fixtures, satin nickel accessories, and framed mirrors in all bathrooms
- Great room with luxury vinyl plank flooring and recessed canned lighting
- Carpeting in all bedrooms and closets
- Upgraded interior door hardware throughout
- Upgraded matte black lighting throughout



Homes by Towne®

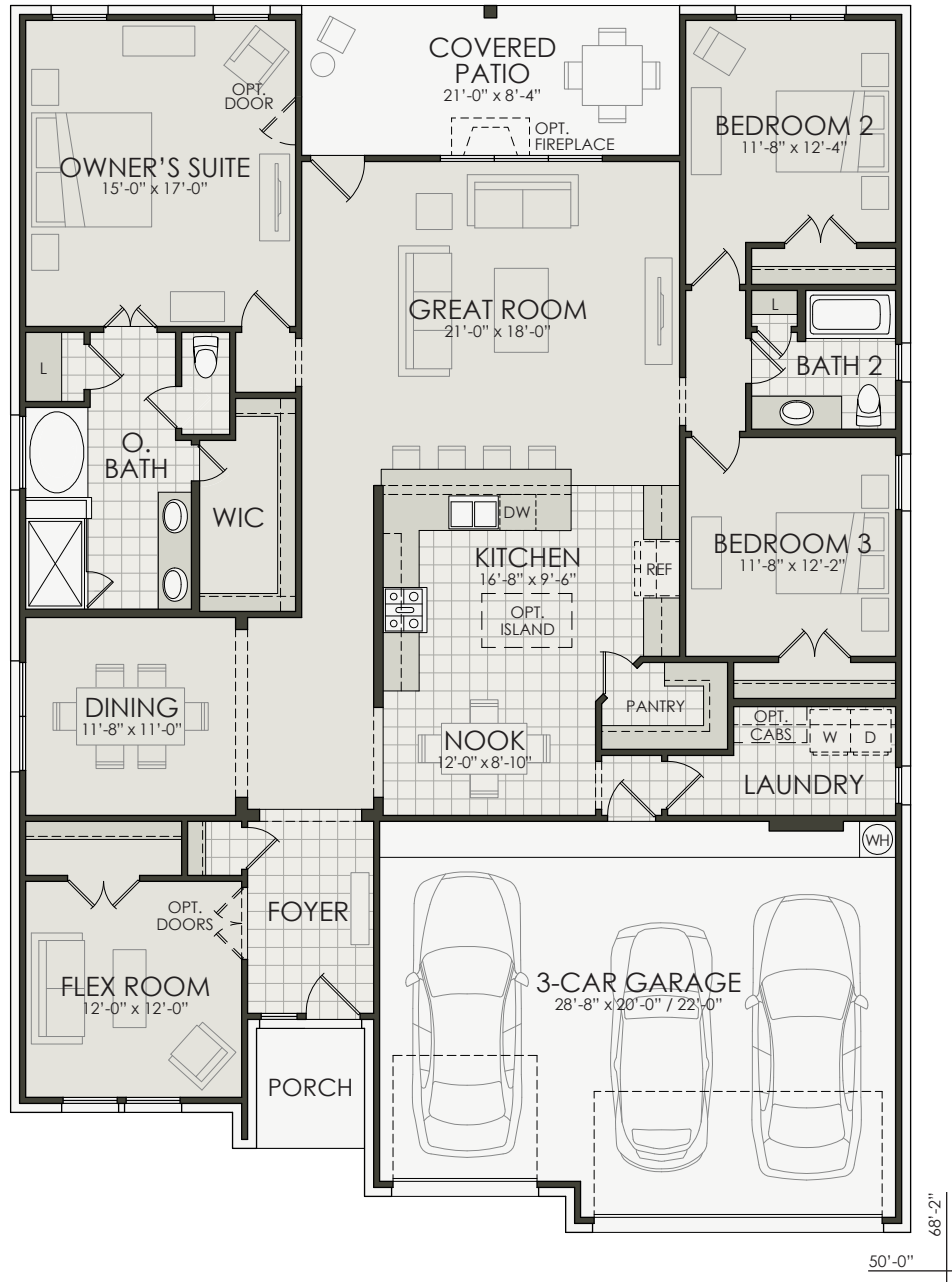
Christie Montgomery
817-484-3350
cmontgomery@hbtttx.com

Carragan Allen
817-484-3350
callen@hbtttx.com
www.homesbytowne.com

Mountain Valley Lake

3309 Greenway Drive (Lot 8-19)
Burleson, TX 76028

Camden
\$441,992



Developer reserves the right to modify floor plans, elevations, specifications, features and prices without prior notice. Square footage and room sizes are approximate. Exterior treatments, window locations and room configurations may vary with elevation. Some decorating treatments in and around the model homes may not be included in the list price and are for display purposes only. All renderings and floor plans are artistic conceptions, and are not intended to be an actual depiction of the buildings, fencing, driveways or landscaping. © 2022 Homes by Towne



08/15/22



Homes by Towne

Christie Montgomery
817-484-3350
cmontgomery@hbttx.com

Carragan Allen
817-484-3350
callen@hbttx.com
www.homesbytowne.com