

# Mountain Valley Lake

3312 Greenway Drive (Lot 7-52)  
Burleson, TX 76028

Edison  
\$434,995

## Edison Elevation C

Available December 2022

2,224 Square Feet  
Single-Story Home  
4 Bedrooms  
2 Baths  
Attached 3 Car Garage



### Peaceful Country Living. Convenient City Location.

Located just south of Fort Worth, the growing city of Burleson, Texas is an ideal location for this family-friendly neighborhood. Residents will enjoy the rolling hills and wooded views, a recreation area with a Jr. Olympic pool and a 20-acre stocked private lake with fishing pier. Close to shopping, entertainment and quality schools, Mountain Valley Lake combines the convenience of city life with the beauty of the country!

### DESIRABLE OPEN CONCEPT FLOOR PLAN FEATURES

#### Kitchen

- Whirlpool appliance package
- Quartz countertops
- Painted cabinets with designer hardware
- Wrapped kitchen island
- Luxury vinyl plank flooring
- Custom tile backsplash
- Stainless steel undermount sink with designer faucet
- Dining area with designer lighting fixture
- Generous pantry storage

#### Exterior

- Brick exterior with elevation enhancements
- Designer front door
- Covered patio pre-wired for ceiling fan
- Extended uncovered patio
- Privacy fence
- Finished 3 car garage with designer garage door
- Coach lighting
- Full sod and irrigation system

#### Other

- Floor to ceiling brick faced electric fireplace with cedar mantel
- Spacious laundry room with luxury vinyl plank flooring
- Walk-in custom tiled shower and surround, tiled bathtub backsplash, and tile flooring in owner's bath
- Tiled bathtub surround and tile flooring in bath 2
- Quartz countertops, painted cabinets with designer hardware, rectangular undermount sinks with matte black fixtures and accessories, upgraded lighting fixtures, and framed mirrors in all bathrooms
- Great room with luxury vinyl plank flooring and recessed canned lighting
- Carpeting in all bedrooms and closets
- Upgraded interior door hardware throughout
- Upgraded matte black lighting throughout



Homes by Towne®

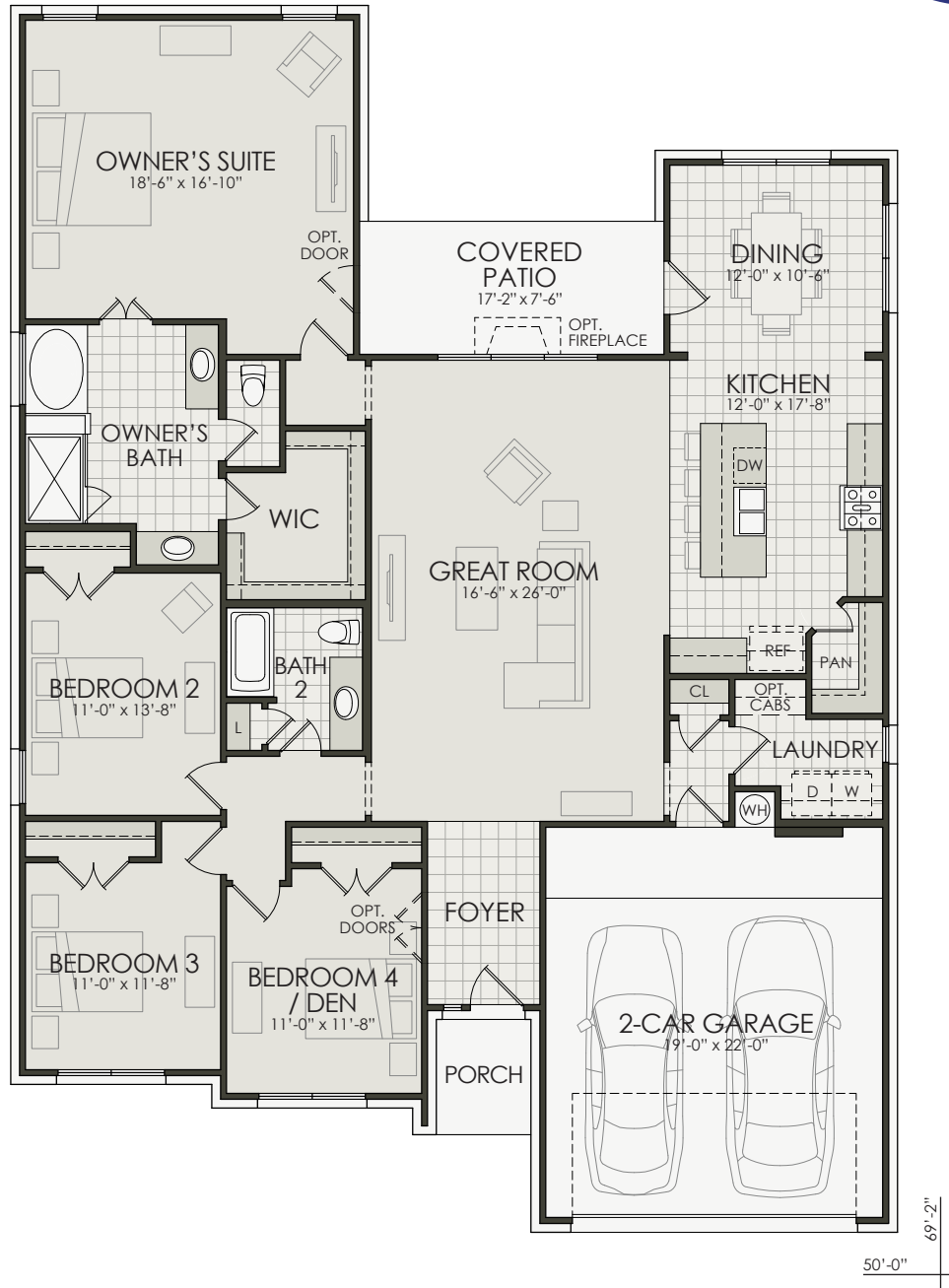
Christie Montgomery  
817-484-3350  
cmontgomery@hbtttx.com

Carragan Allen  
817-484-3350  
callen@hbtttx.com  
www.homesbytowne.com

# Mountain Valley Lake

3312 Greenway Drive (Lot 7-52)  
Burleson, TX 76028

Edison  
\$434,995



Developer reserves the right to modify floor plans, elevations, specifications, features and prices without prior notice. Square footage and room sizes are approximate. Exterior treatments, window locations and room configurations may vary with elevation. Some decorating treatments in and around the model homes may not be included in the list price and are for display purposes only. All renderings and floor plans are artistic conceptions, and are not intended to be an actual depiction of the buildings, fencing, driveways or landscaping. © 2022 Homes by Towne



08/15/22



Homes by Towne

Christie Montgomery  
817-484-3350  
cmontgomery@hbtttx.com

Carragan Allen  
817-484-3350  
callen@hbtttx.com  
www.homesbytowne.com