

The Preserve at Mountain Valley Lake

2663 Streamside Drive (Lot 35-38)
Burleson, TX 76028

Westbrook
\$449,890

Westbrook Elevation C

Available Spring 2023

2,047 Square Feet
Single-Story Home
3 Bedrooms
2 Baths
Attached 3 Car Garage



Peaceful Country Living. Convenient City Location.

Located just south of Fort Worth, the growing city of Burleson, Texas is an ideal location for this family-friendly neighborhood. Residents will enjoy the rolling hills and wooded views, a recreation area with a Jr. Olympic pool and a 20-acre stocked private lake with fishing pier. Close to shopping, entertainment and quality schools, Mountain Valley Lake combines the convenience of city life with the beauty of the country!

DESIRABLE OPEN CONCEPT FLOOR PLAN FEATURES

Kitchen

- Whirlpool built-in appliance package
- Under cabinet stainless steel range hood
- Quartz countertops
- Painted cabinets with designer hardware
- Panel wrapped kitchen island
- Pendant lights above kitchen island sink
- Luxury vinyl plank flooring
- Custom hexagon tile backsplash
- Handcrafted single bowl sink with designer faucet
- Dining area with designer brushed nickel lighting fixture
- Generous pantry storage

Exterior

- Brick exterior with elevation enhancements
- Designer front door
- Extended covered patio with door to owner's suite and pre-wired for ceiling fans
- Privacy fence
- Finished 3 car garage with designer garage door
- Coach lighting
- Full sod and irrigation system

Other

- Floor to ceiling stone electric fireplace with stained cedar mantel
- Spacious laundry room with luxury vinyl plank flooring and door to owner's suite walk-in closet
- Walk-in tiled shower with satin nickel frame, tiled bathtub backsplash extended to ceiling, designer lighting fixtures, and upgraded tile flooring in owner's suite bath
- Upgraded tiled bathtub surround extended to ceiling, designer lighting fixture, and tile flooring in bath 2
- Upgraded quartz countertops, painted cabinets with satin nickel hardware, rectangular undermount sinks with stainless fixtures, satin nickel accessories, and framed mirrors in all bathrooms
- Great room with luxury vinyl plank flooring and recessed canned lighting
- Carpeting in all bedrooms and closets
- Upgraded interior door hardware throughout



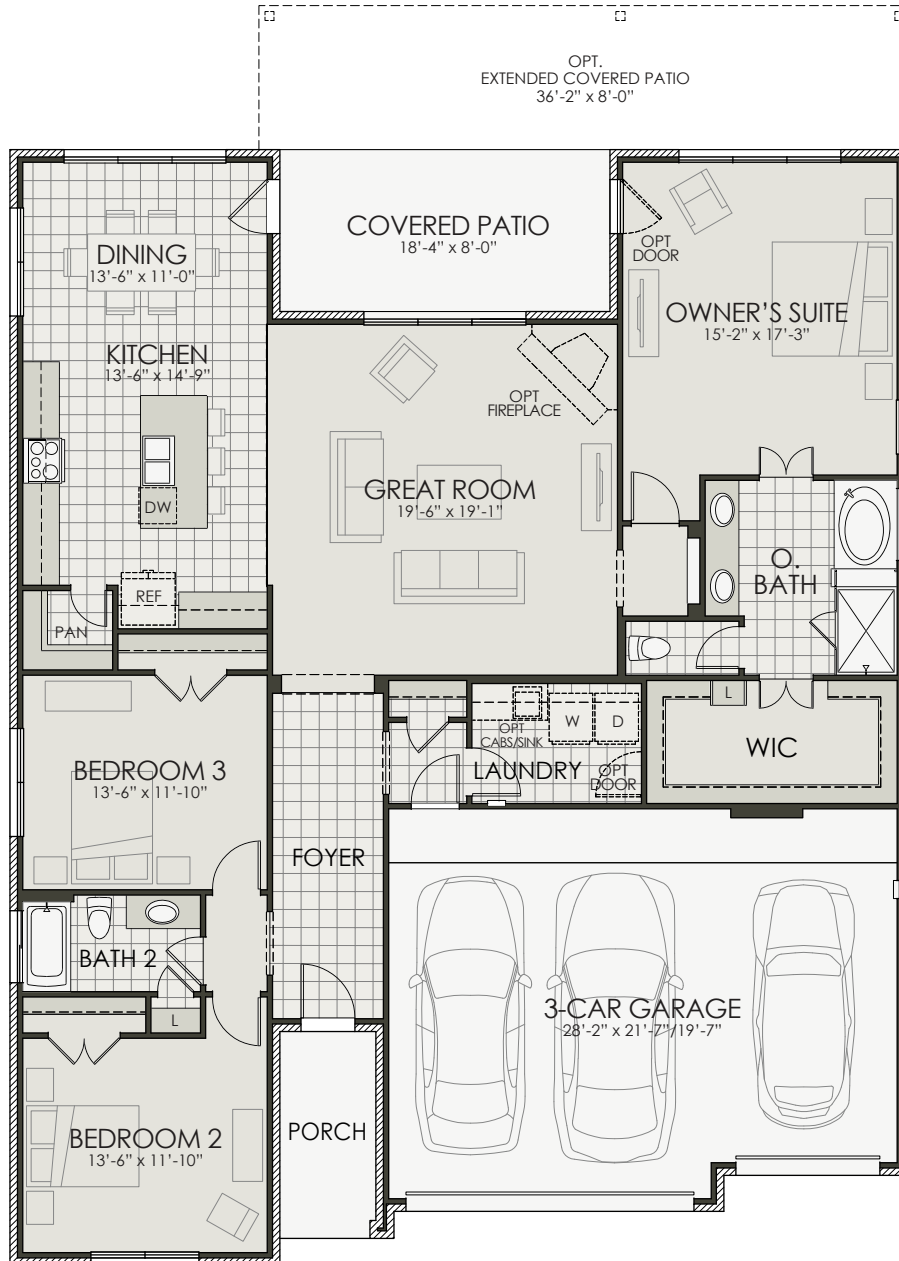
Homes by Towne®

Christie Montgomery
817-484-3350
cmontgomery@hbttx.com
www.homesbytowne.com

The Preserve at Mountain Valley Lake

2663 Streamside Drive (Lot 35-38)
Burleson, TX 76028

Westbrook
\$449,890



Developer reserves the right to modify floor plans, elevations, specifications, features and prices without prior notice. Square footage and room sizes are approximate. Exterior treatments, window locations and room configurations may vary with elevation. Some decorating treatments in and around the model homes may not be included in the list price and are for display purposes only. All renderings and floor plans are artistic conceptions, and are not intended to be an actual depiction of the buildings, fencing, driveways or landscaping. © 2023 Homes by Towne



01/18/23



Homes by Towne

Christie Montgomery
817-484-3350
cmontgomery@hbttx.com
www.homesbytowne.com